

300 Series Gas Chromatograph

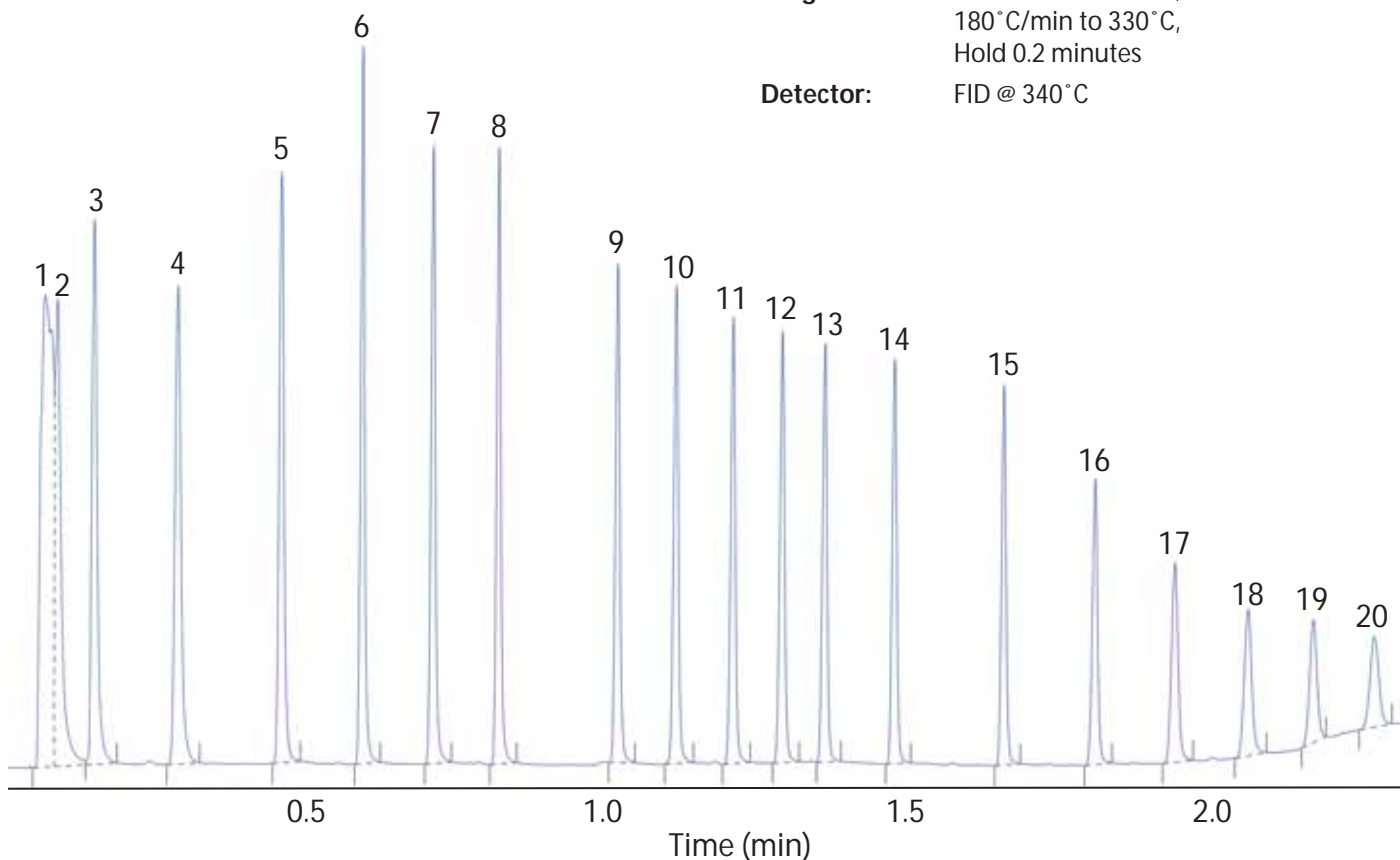
Application Note

ASTM D2887-01 Calibration Mix (C6-C44)

Application number: 001

- | | | | |
|----|----------------------------|----|-------------------------|
| 1 | Carbon disulfide (Solvent) | 11 | Hexadecane (C16) |
| 2 | Hexane (C6) | 12 | Heptadecane (C17) |
| 3 | Heptane (C7) | 13 | Octadecane (C18) |
| 4 | Octane (C8) | 14 | Eicosane (C20) |
| 5 | Nonane (C9) | 15 | Tetracosane (C24) |
| 6 | Decane (C10) | 16 | Octacosane (C28) |
| 7 | Undecane (C11) | 17 | Dotriacontane (C32) |
| 8 | Dodecane (C12) | 18 | Hexatriacontane (C36) |
| 9 | Tetradecane (C14) | 19 | Tetracontane (C40) |
| 10 | Pentadecane (C15) | 20 | Tetratetracontane (C44) |

Column: 4m, 0.25mm, 0.25µm MTX-5
Carrier Gas: Hydrogen at constant flow of 2.4ml/sec
Injector: Split/splitless @ 320°C
Split Flow: 50ml/min
Temperature Programme: 35°C hold for 0.2 minutes, 120°C/min to 150°C, 180°C/min to 330°C, Hold 0.2 minutes
Detector: FID @ 340°C



Advanced Chromatography Systems
3547 Meeks Farm Road
Suite D-1
Charleston
SC 29455
USA
Tel: 843 330 3538
Fax: 843 746 4545
Email: info@advancedlcgcs.com
Website: <http://www.advancedlcgcs.com>



Cambridge Scientific Instruments
12-15 Sedgeway Business Park
Witchford
Cambridgeshire
CB6 2HY
UK
Tel: +44 (0)1353 669916
Fax: +44 (0)1353 669917
Email: info@camsci.co.uk
Website: <http://www.camsci.co.uk>