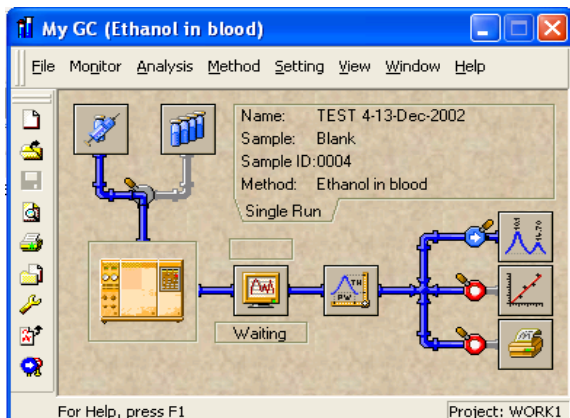




Clarity Integration Package

Now "21 CFR" Part 2 Compliant



Clarity is a high-performance chromatographic station for acquisition and processing of chromatographic data. The station uses either an internal (PCI or ISA) A/D converter or an external A/D unit (communication via RS232 or USB).

The accompanying software is earmarked for all 32-bit Windows operating systems (Win95, 98, ME, NT, 2000 and XP). Clarity can be connected to almost any gas chromatographic, liquid chromatographic or electrophoretic instrument with a voltage output.

Acquisition of Chromatographic Data

Clarity offers the possibility to collect data from any chromatographic detector with a voltage output. In co-operation with an autosampler the station enables one not only to collect and process chromatographic data but to provide a comprehensive printed report of the analytical results.

Documentation of Measuring Conditions

All conditions of an analysis are documented in the method file.

Standard Timed Events

Clarity enables the user to define an event table, which at a specified time of analysis (or at some prescribed course of the detector signal) controls up to 4 relay contacts.

- Simple to use - Set acquisition rate, end time and go.
- Up to 4 channels options per A/D converter
- Manipulate and save analysis conditions post run
- Single run or sequence run capability
- Live on screen display of instrument output
- Manual or automatic integration
- Multi-Level, Multi-component calibration
- Fully detailed action log
- Fully editable report formats
- Comprehensive online help



Data Processing

Data Acquisition and processing is based on method and calibration files.

Peak detection Algorithm

The highly efficient peak detection algorithm enables hundreds of peaks to be identified in a chromatogram. The obtained data can be subsequently processed in many different ways without the necessity to repeat the analysis.

Limiting Parameters

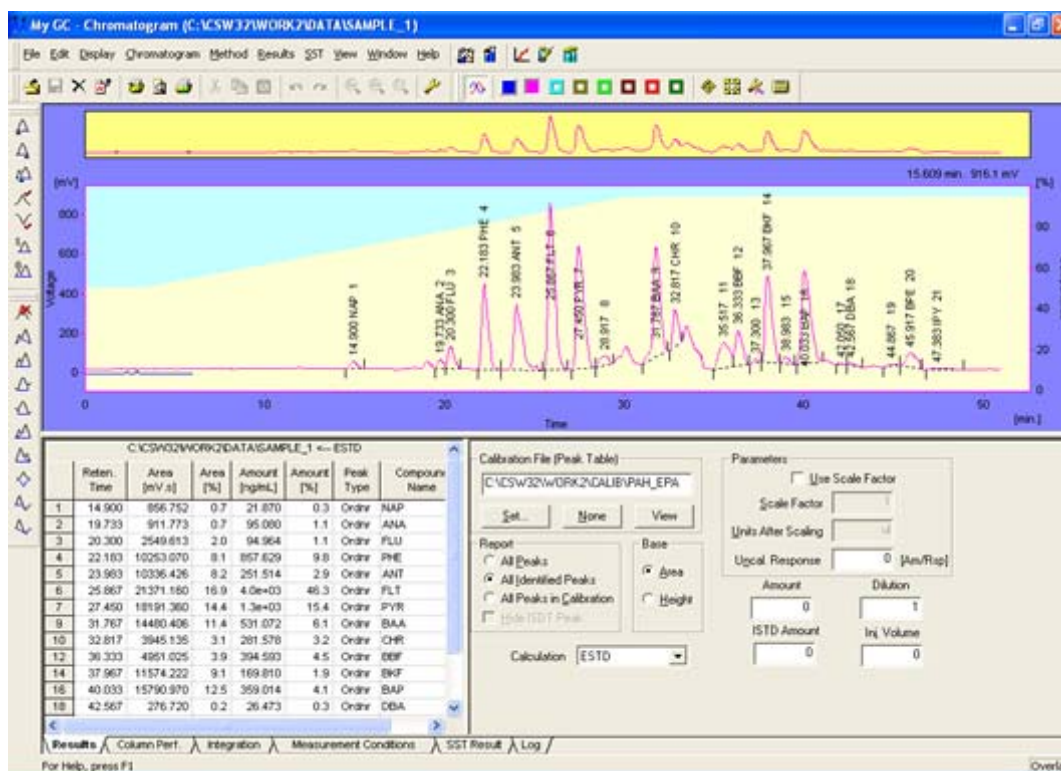
The method of data evaluation employed may contain parameters for suppressing peaks of no interest.

Baseline Operations

The Baseline below the identified peaks can be corrected and modified by a number of subsequent operations (tangential separation, horizontal projection, ...), and peaks and groups of peaks can be identified manually.

All Chromatogram Modification performed from a single place

Clarity offers rapid re-integration directly from the chromatogram window if the fundamental integration parameters have been changed. An efficient Fast Fourier Transform tool for filtering poor quality detector signal is also available.



Try it for yourself

If you would like a free copy of the demonstration version of Clarity please contact us, our details are below.

How to Order:

Part Number	Description
20622057	Clarity Lite - 1 Channel (PCI)
20622058	Clarity Lite - 1 Channel (USB)
20622059	Clarity - 2 Channel (PCI)
20622060	Clarity - 2 Channel (USB)

Cambridge Scientific Instruments Ltd
12-15 Sedgeway Business Park, Ely, Cambridgeshire, CB6 2HY, UK
Email: camsci@btconnect.com Website: www.camsci.co.uk