



Application Number

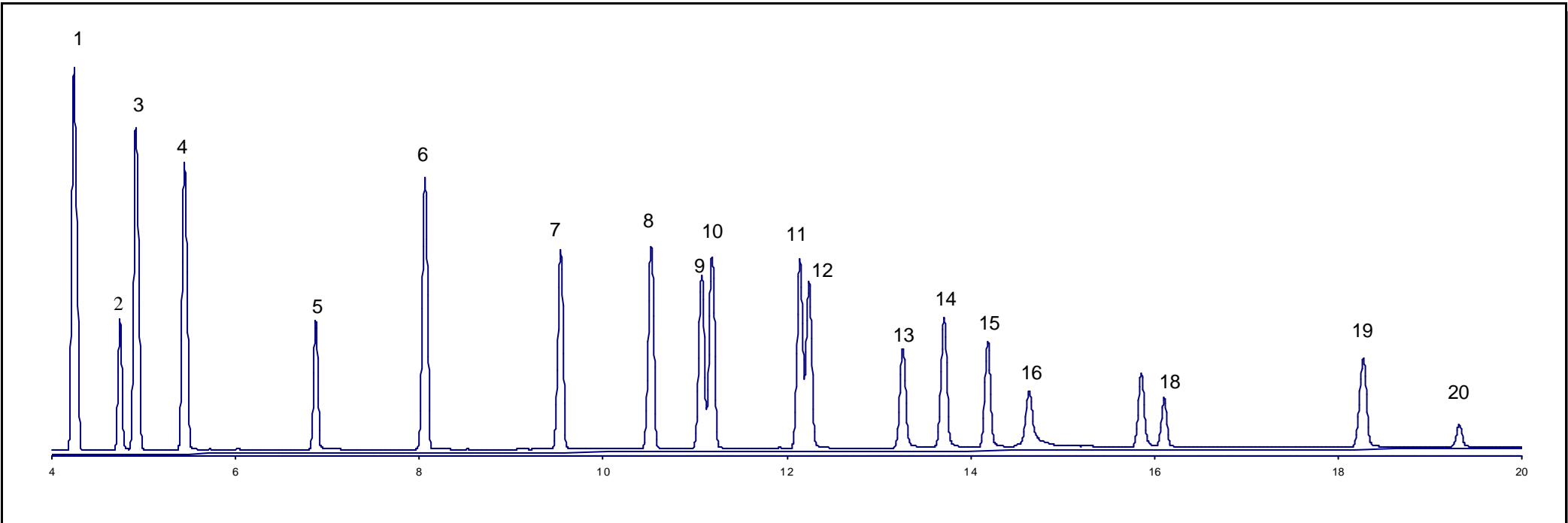
021001

200 Series GC  
Application Note



Pesticide Mix AB #1

<b>Column</b>	DB5 0.25 x 0.25 x 30m	1	$\alpha$ -BHC	11	4,4 - DDE
<b>Flow</b>	Helium 40cm/min	2	$\beta$ -BHC	12	Dieldrin
<b>Program</b>	200C for 3min 3C/min to 250C Hold 5.4min	3	$\chi$ -BHC	13	Eldrin
<b>ECD</b>	Current 30	4	$\delta$ -BHC	14	Endosulphan II
<b>ECD</b>	Makeup N2 @ 15psi = 36/mls/min	5	Heptachlor	15	4,4 - DDD
<b>Pesticide Mix AB#1</b>	12pg of each compound on column	6	Aldrin	16	Eldrin Aldehyde
<b>Split Ratio</b>	25:1	7	Heptachlor-Epoxyde	17	Endosulfan Sulfate
		8	$\chi$ -Chlordane	18	4,4 - DDT
		9	Endosulphan I	19	Eldrin Keytone
		10	$\alpha$ -Chlordane	20	Methoxychlor



Application Number

021001